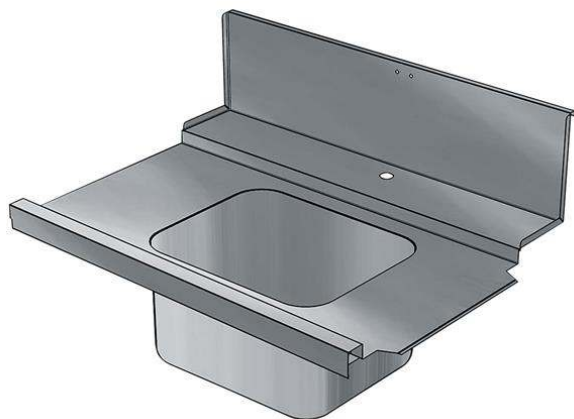




Handling System for Hood type Pre-wash Infill Top with Bowl Right to Left, 1000mm

ITEM # _____
MODEL # _____
NAME # _____
SIS # _____
AIA # _____



865317 (BHHP1B10R)

Prewash infill Top with bowl,
r>l, 1000mm

Short Form Specification

Item No. _____

For hood type dishwashers. Constructed in 304 AISI stainless steel with backsplash mm250h. Bowl size mm500x400x250h with overflow pipe and drain hole. Basket direction: from right to left.

Main Features

- To be secured to the dishwasher and fitted to the receiving and sorting tables at the other end.
- Designed for 500x500 mm dishwashing racks.

Construction

- Deep anti-drip profiles completely folded with lower edge for safe and easy cleaning.
- All surfaces smooth with polished finish.
- 304 AISI stainless steel construction throughout.
- Included splashback to prevent water spatter.

Optional Accessories

- Single plastic drain syphon 2 PNC 895313 ☐ " for Sinks

APPROVAL: _____



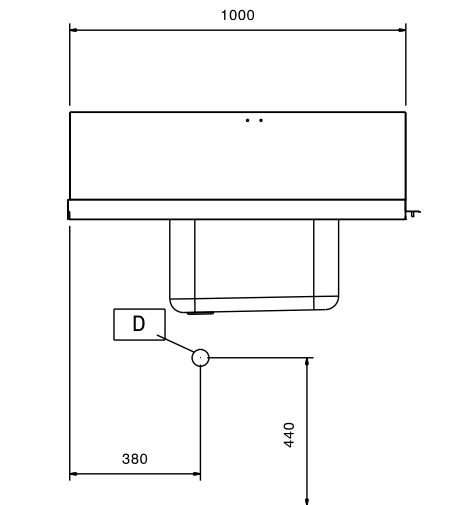
Experience the Excellence
www.electroluxprofessional.com



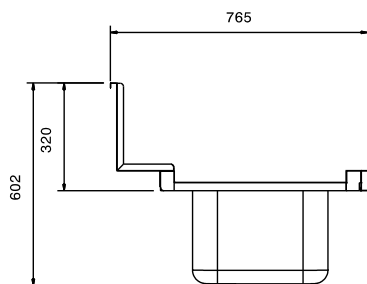
Electrolux
PROFESSIONAL

Handling System for Hood type Pre-wash Infill Top with Bowl Right to Left, 1000mm

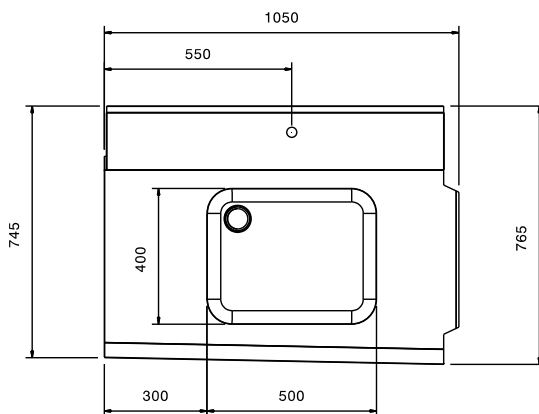
Front



Side



Top



Key Information:

External dimensions, Width:

865317 (BHHP1B10R) 1050 mm

External dimensions, Depth: 765 mm

External dimensions, Height: 600 mm

Net weight: 8 kg

Basin dimensions: 500x400x300h

Feeding direction: from Right to Left

Handling System for Hood type
Pre-wash Infill Top with Bowl Right to Left, 1000mm

The company reserves the right to make modifications to the products
without prior notice. All information correct at time of printing.

2025.04.18